

Ice Position

Micah Blake McCurdy
micah@hockeyviz.com

Ottawa ON
Ottawa Hockey Analytics Conference
January 16, 2016

The Idea

Can players affect their team results by gaining or losing territory?

The Idea

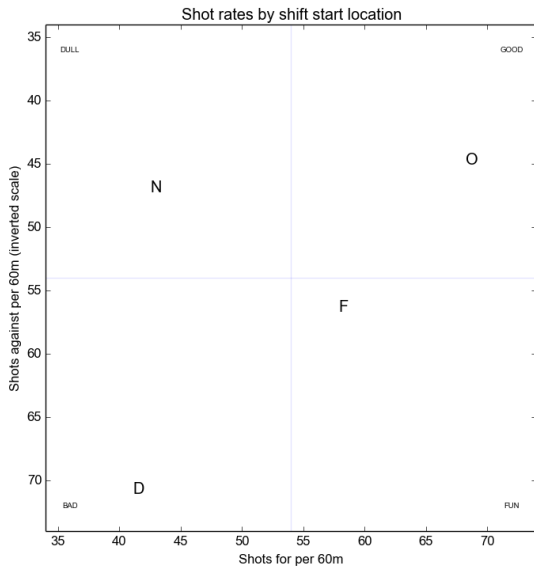
Can players affect their team results by gaining or losing territory?

- ▶ Not really.

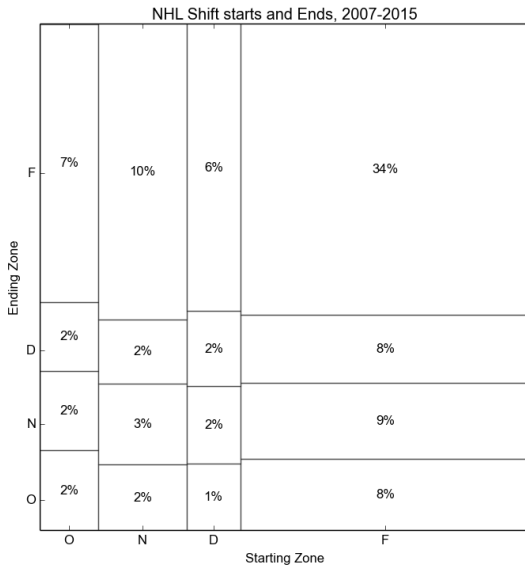
Shift recap

- ▶ Some shifts start on faceoffs in OZ, NZ, or DZ.
- ▶ Some shifts start on-the-fly.
- ▶ Not every faceoff is a shift start.
- ▶ On-the-fly starts cannot be separated by previous puck location.

Neutral zone faceoffs are boring



On-the-fly dominates starts and ends

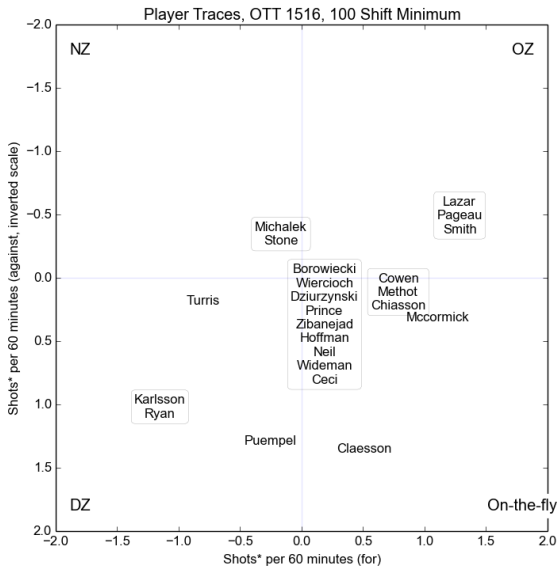


Footprint

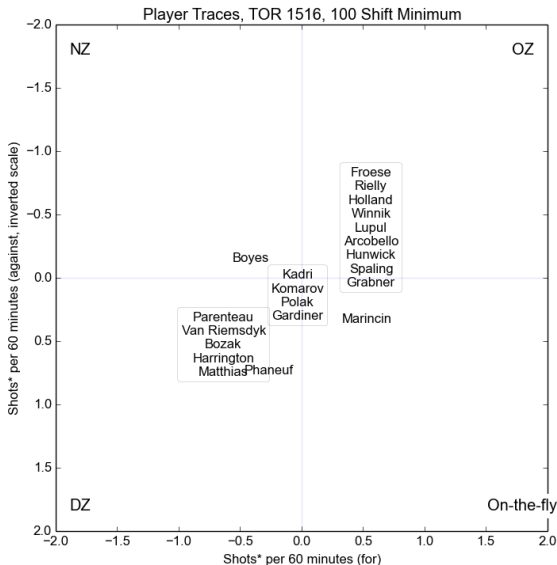
For each player we calculate a *footprint* by comparing

- ▶ Typical shot rate from shifts starting where a given player's shifts end; vs
- ▶ Typical shot rate from shifts starting where a typical team members's shifts *would* end if they were deployed like the player in question.

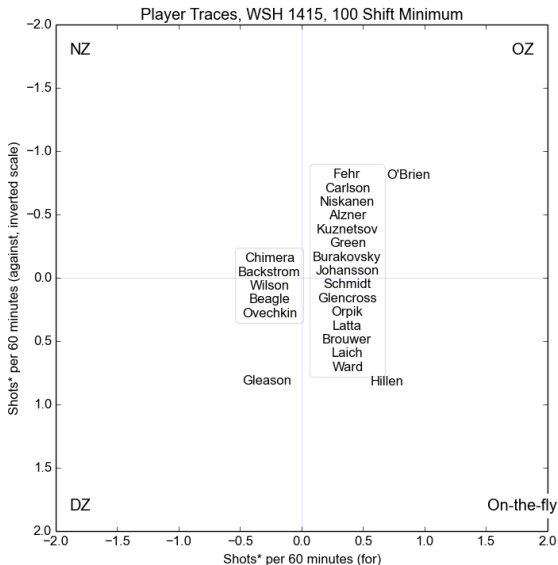
Relative Footprint, Ottawa 2015-2016



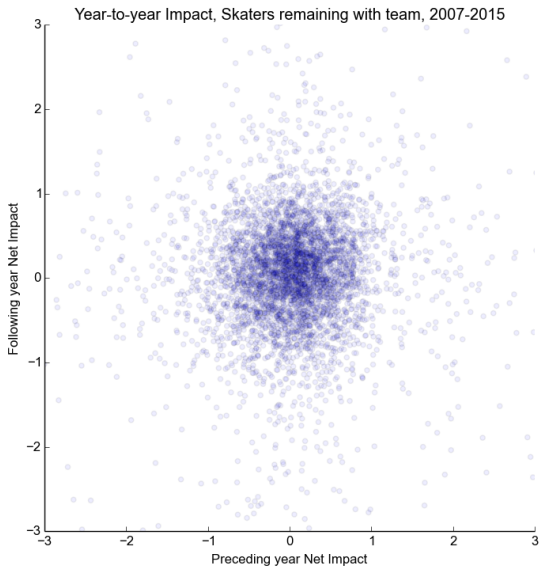
Relative Footprint, Toronto 2015-2016



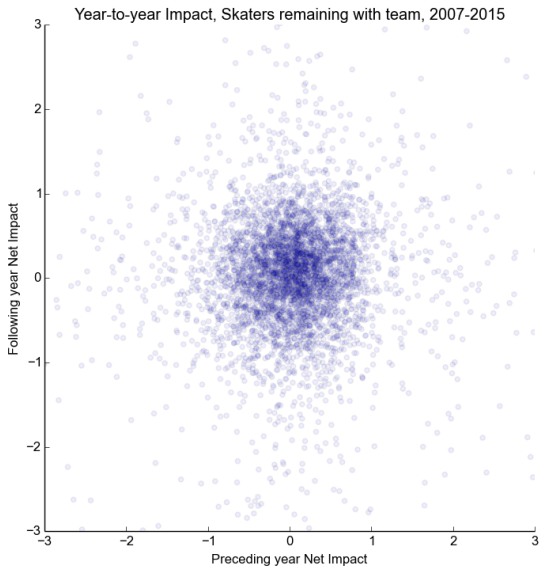
Relative Footprint, Washington 2014-2015



Team-relative year-to-year



Team-relative year-to-year ($r = -0.02$)



Thanks!

